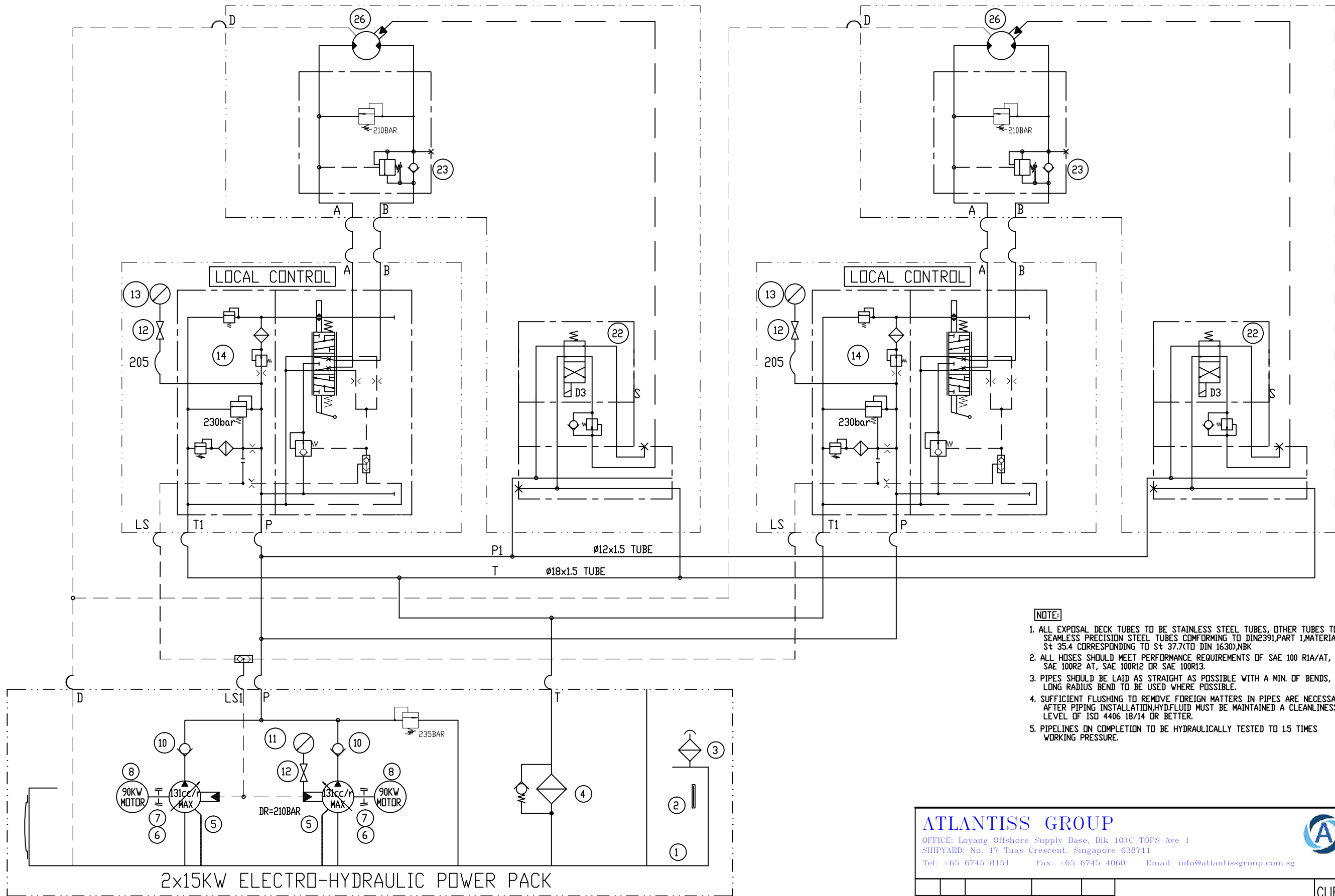


HYD. WINDLASS & WINCH

HYD. WINDLASS & WINCH



NOTE:

1. ALL EXPOSAL DECK TUBES TO BE STAINLESS STEEL TUBES, OTHER TUBES TO BE SEAMLESS PRECISION STEEL TUBES CONFORMING TO DIN2391,PART 1,MATERIAL S \pm 35.4 CORRESPONDING TO S \pm 37.7(TO DIN 1630,NBK
2. ALL HOSES SHOULD MEET PERFORMANCE REQUIREMENTS OF SAE 100 R1A/AT, SAE 100R2 AT, SAE 100R12 OR SAE 100R13.
3. PIPES SHOULD BE LAID AS STRAIGHT AS POSSIBLE WITH A MIN. OF BENDS, LONG RADIUS BEND TO BE USED WHERE POSSIBLE.
4. SUFFICIENT FLUSHING TO REMOVE FOREIGN MATTERS IN PIPES ARE NECESSARY AFTER PIPING INSTALLATION,HYD.FLUID MUST BE MAINTAINED A CLEANLINESS LEVEL OF ISO 4406 18/14 OR BETTER.
5. PIPELINES ON COMPLETION TO BE HYDRAULICALLY TESTED TO 1.5 TIMES WORKING PRESSURE.

ATLANTISS GROUP

OFFICE: Loyang Offshore Supply Base, Blk 104C TOPS Ave 1
SHIPYARD: No. 17 Tuas Crescent, Singapore 638711
Tel: +65 6745 8151 Fax: +65 6745 4060 Email: info@atlantissgroup.com.sg



MARK QTY SIGNATURE REMARK DATE				HYDRAULIC SCHEMATICAL FOR 2x90kw HPU	CLIENT: --		
DRAWN BY PHANG 07/04/09					PROJECT: 23.5 M TUG BOAT		
DESIGNED BY JADSEN 07/04/09					Total NO:	WEIGHT (kg)	SCALE
CHECKED BY PYF 07/04/09					NO. :	Abt.**	
APPROVED BY JP 07/04/09					DRAWING NO. : PT2008-0016-03-09-01		
MATERIAL :				JOB NO.:K03HOM-033 REVISION:00			

